

# SUSTAINABILITY

UNLIMITED LLP - ENERGY & INFRASTRUCTURE ADVISORS

## RIGIFA FARM BATTERY ENERGY STORAGE SYSTEM (BESS)

### LOCATION



#### LOCATION PLAN OF RIGIFA FARM

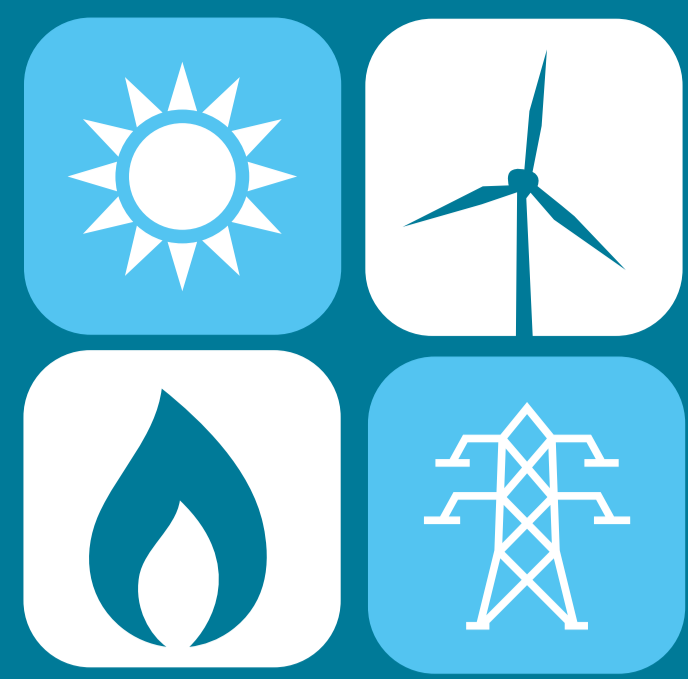
Copyright © Resources Unlimited LLP 2018

- The location is approximately 1.7km to the main **Redmoss Grid Supply Point**.
- There is available **grid capacity** at this location.
- There are **very few suitable locations** in Scotland such as this
- This location **minimises the amount of connection infrastructure required** which is better for the environment and means lower embodied carbon emissions.
- The application site is located on land at Rigifa Farm, adjacent to Cove Road, **to the south of Cove and is screened to the south by Leith's Quarry**.
- The proposed site is **approximately 1 hectare (the size of a football pitch)** and currently consists of low quality agricultural land.



Visit:

<https://www.sustainability-unlimited.com/consultations/rigifa/>

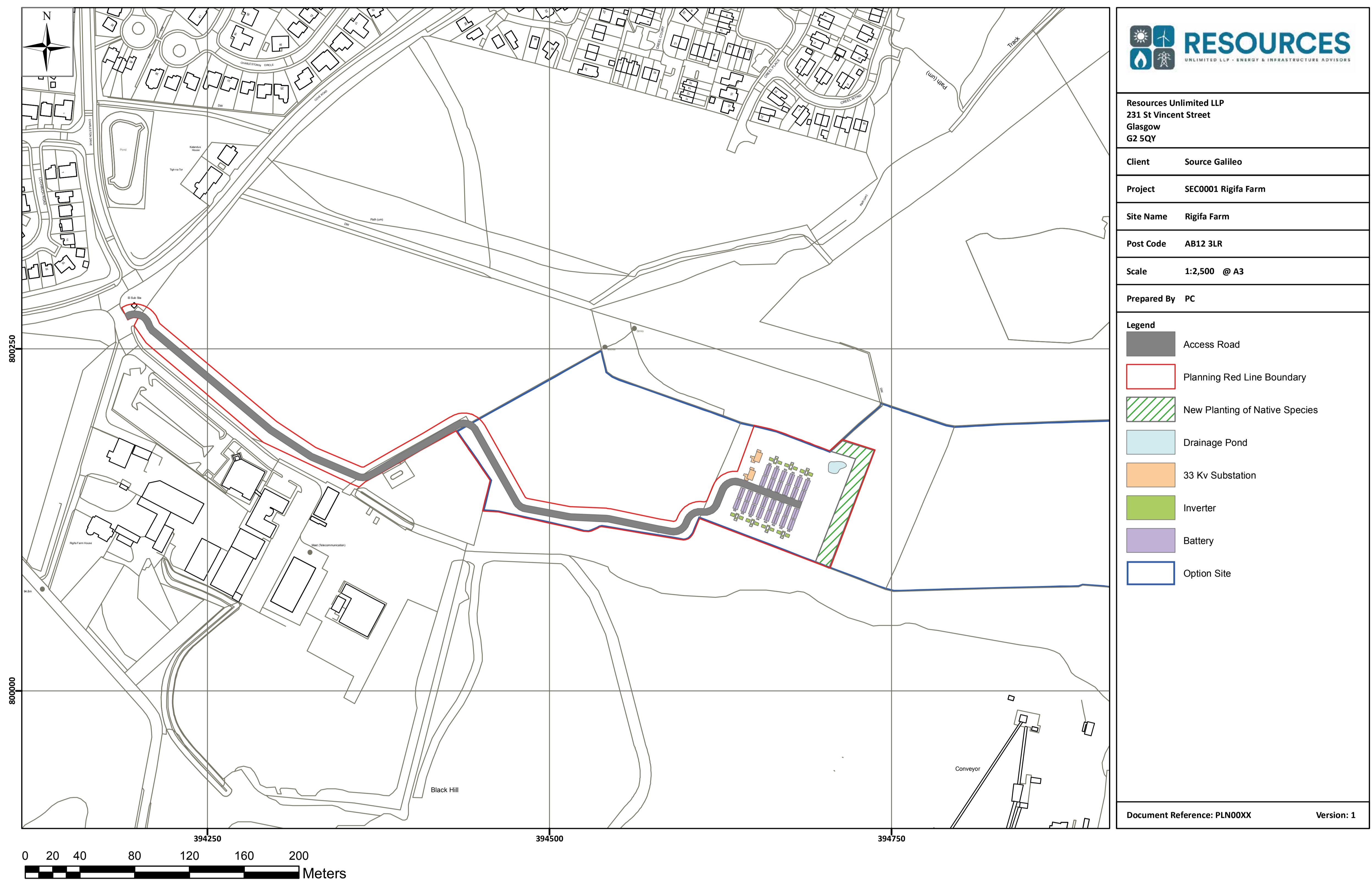


# SUSTAINABILITY

UNLIMITED LLP - ENERGY & INFRASTRUCTURE ADVISORS

## RIGIFA FARM BATTERY ENERGY STORAGE SYSTEM (BESS)

### SITE LAYOUT



#### SITE PLAN OF RIGIFA FARM

Copyright © Resources Unlimited LLP 2018

- **Containerised** battery storage facility (56 x containers) with up to 49.9MW of energy storage.
- Circa 7.8-meter-long containers at a height of approx. 2.6 meters.
- **An access track, electricity meter building, fences, and containers housing batteries** and related equipment would make up the development.
- **Stores extra grid generation in reserve** - returns electricity to the grid as necessary. Allows more green energy to be added to grid mix.
- This **balances** the grid's supply and demand.
- The **existing hedgerows and tress will be retained** and a belt of new planting of native trees is proposed along the roadside to screen the development.



Visit:

<https://www.sustainability-unlimited.com/consultations/rigifa/>

# RIGIFA FARM

## BATTERY ENERGY STORAGE SYSTEM (BESS)

### WELCOME



## WHO IS THE APPLICANT?

- **UK Company** dedicated to Energy Storage Development.
- Based in **the UK and Ireland**.
- Many years of experience in initiating and developing new renewable energy projects in the UK.
- **Delivering over 70MW** of Energy Storage for Scotland.

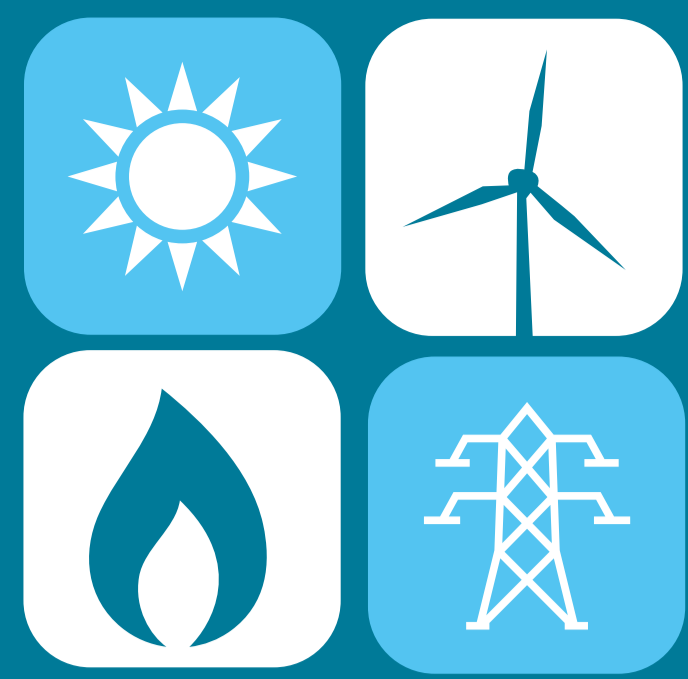
## WHY IS BATTERY STORAGE IMPORTANT?

- Scotland is aiming to **achieve net-zero by 2045**.
- **Intermittent renewable energy** generation means we still have to rely on fossil fuel generation.
- **Battery Projects** let us store excess renewables energy until it is needed – plugging the gap.
- **By 2050**, according to National Grid ESO, we may require up to 40 GW of energy storage.
- New energy storage capacity is encouraged by the Scottish **Energy Strategy 2018** in order to hasten the adoption of storage innovation and deployment across Scotland.



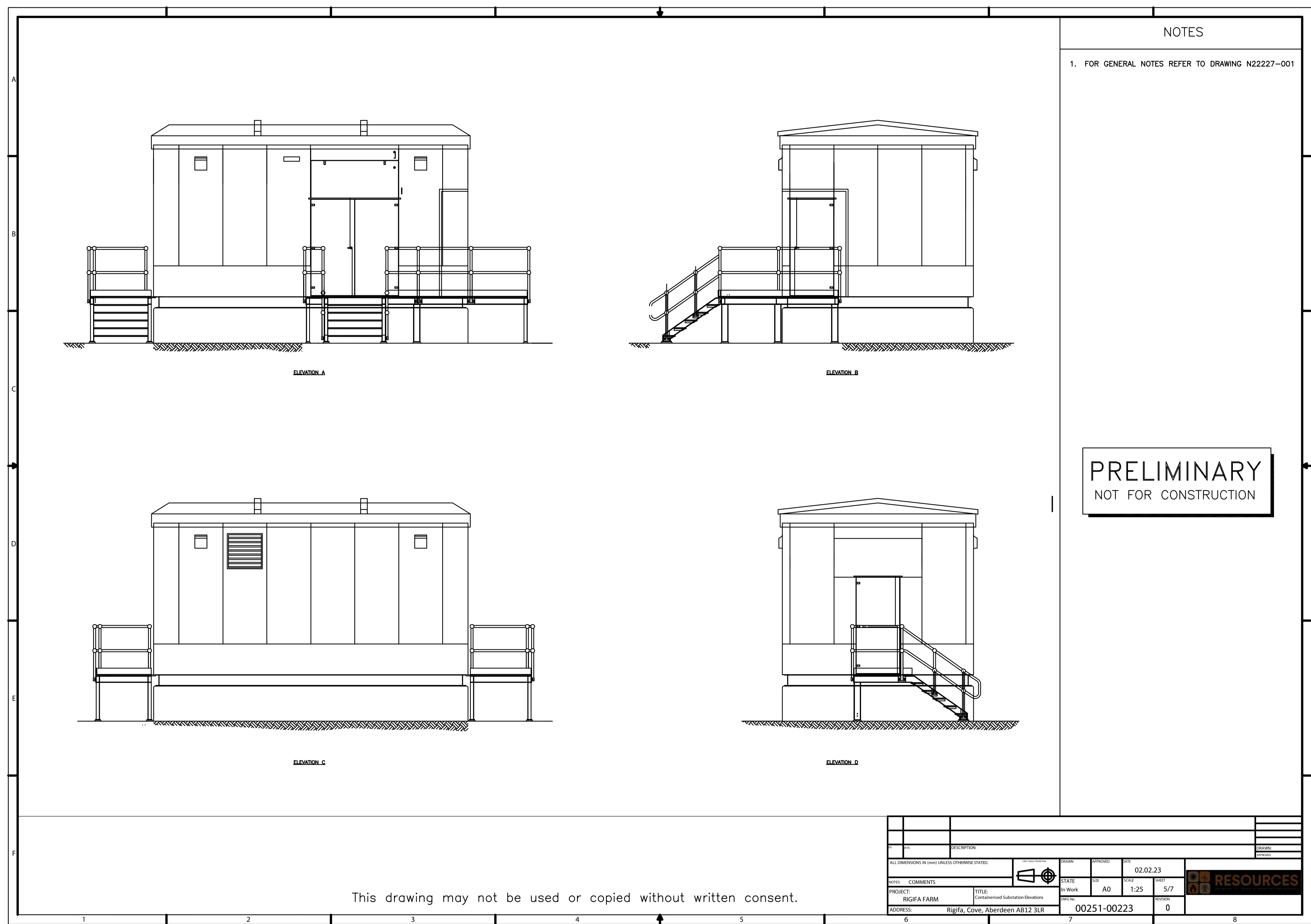
Visit:

<https://www.sustainability-unlimited.com/consultations/rigifa/>

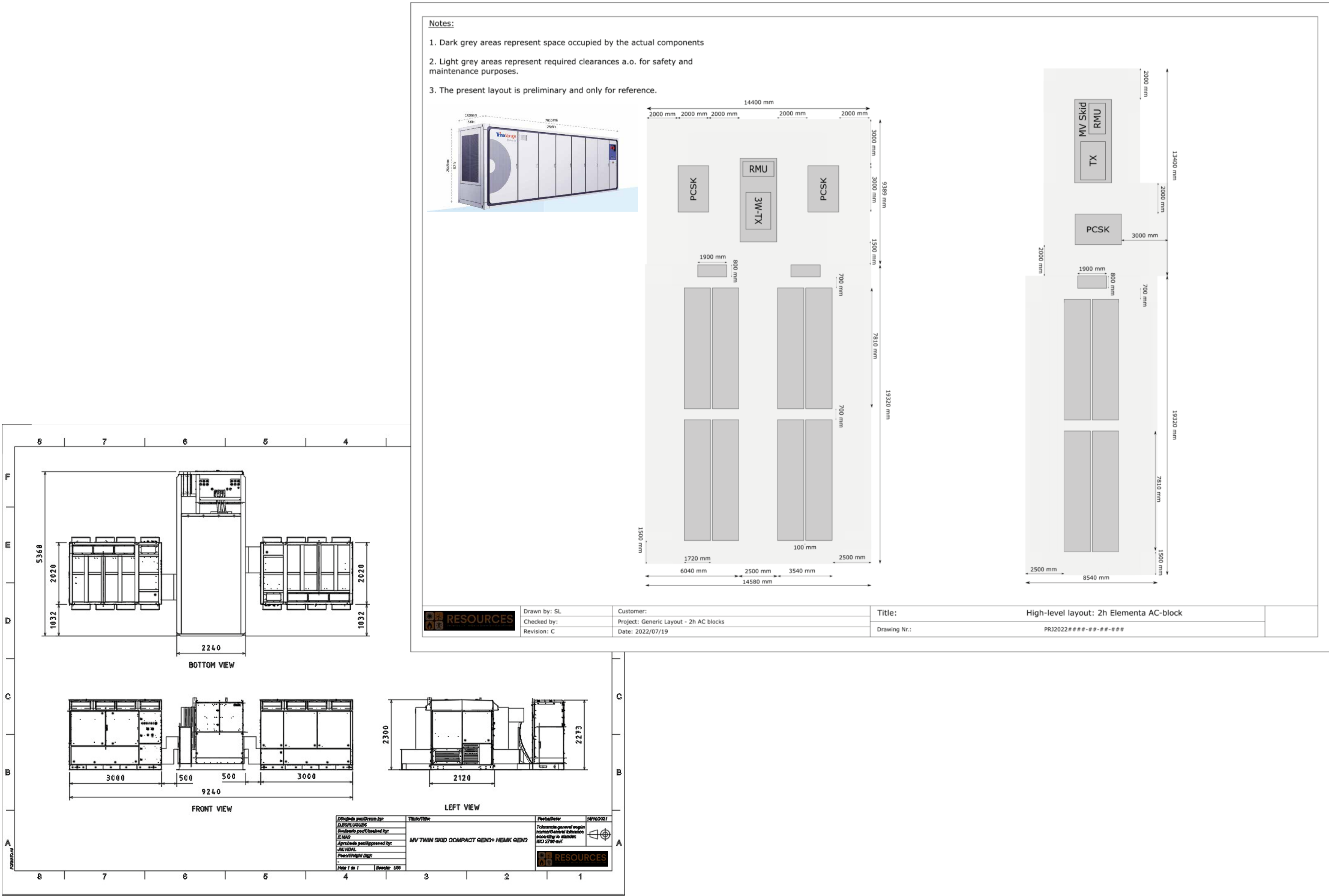


## RIGIFA FARM BATTERY ENERGY STORAGE SYSTEM (BESS)

### SITE ELEVATIONS



- **Containerised** battery storage facility (56 x containers) with up to 49.9MW of energy storage.
- Circa 7.8-meter-long containers at a height of approx. 2.6 meters.



Visit:

<https://www.sustainability-unlimited.com/consultations/rigifa/>