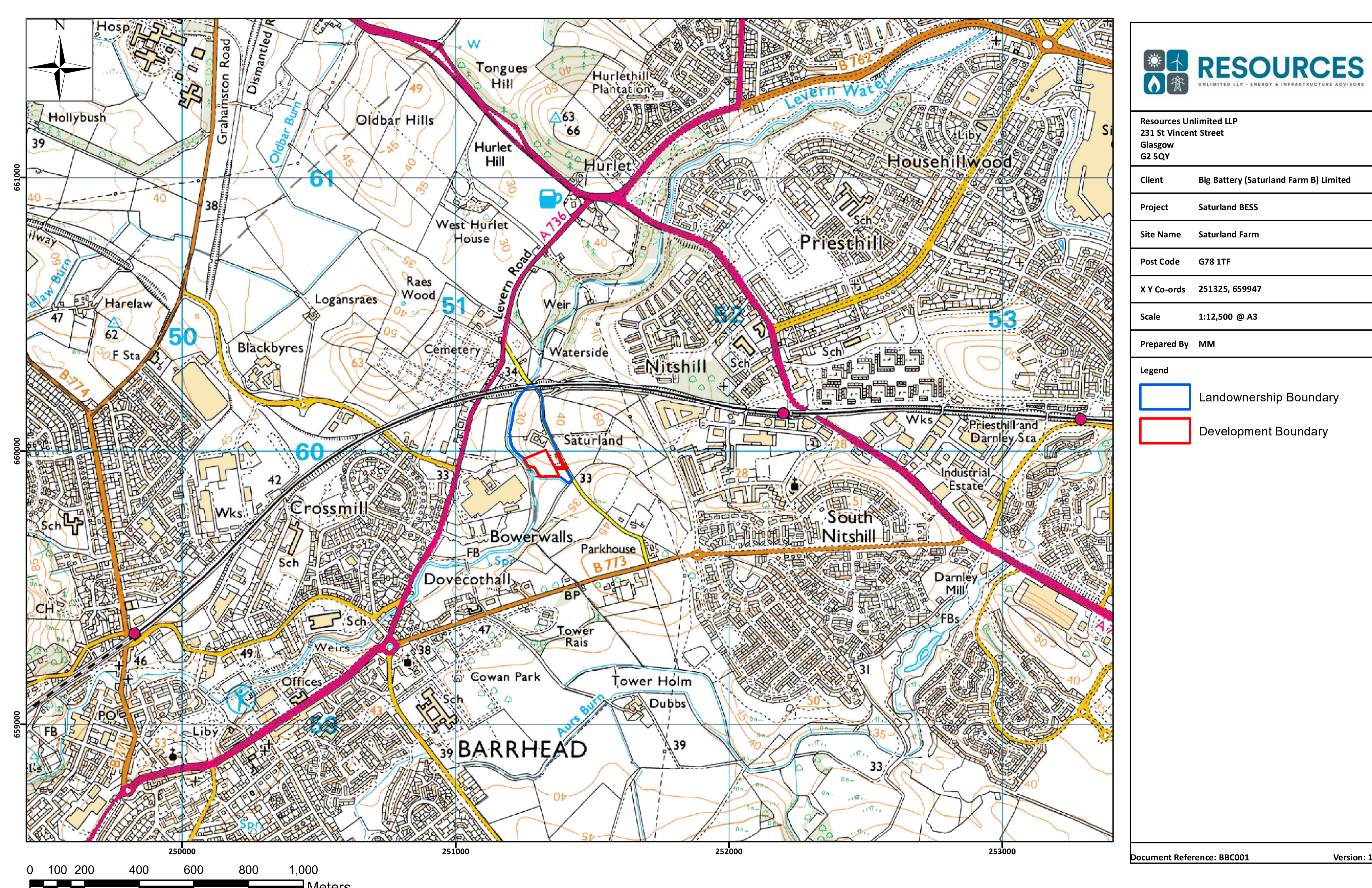


SUSTAINABILITY

UNLIMITED LLP - ENERGY & INFRASTRUCTURE ADVISORS

SATURLAND FARM BATTERY ENERGY STORAGE SYSTEM (BESS)

LOCATION



Location Plan of Saturland Farm

Copyright © Resources Unlimited LLP 2023

- The location is approximately 1.88km from **Crookston A Grid Supply Point**.
- There is available **grid capacity** at this location.
- There are **very few suitable locations** in Scotland such as this.
- This location **minimises the amount of connection infrastructure required** which is better for the environment and means lower embodied carbon emissions.
- The application site is located on land at Barrhead, **East Renfrewshire adjacent to Salterland Road**.
- The proposed site is **approximately 1 hectare (the size of a football pitch)** and currently consists of low quality agricultural land.



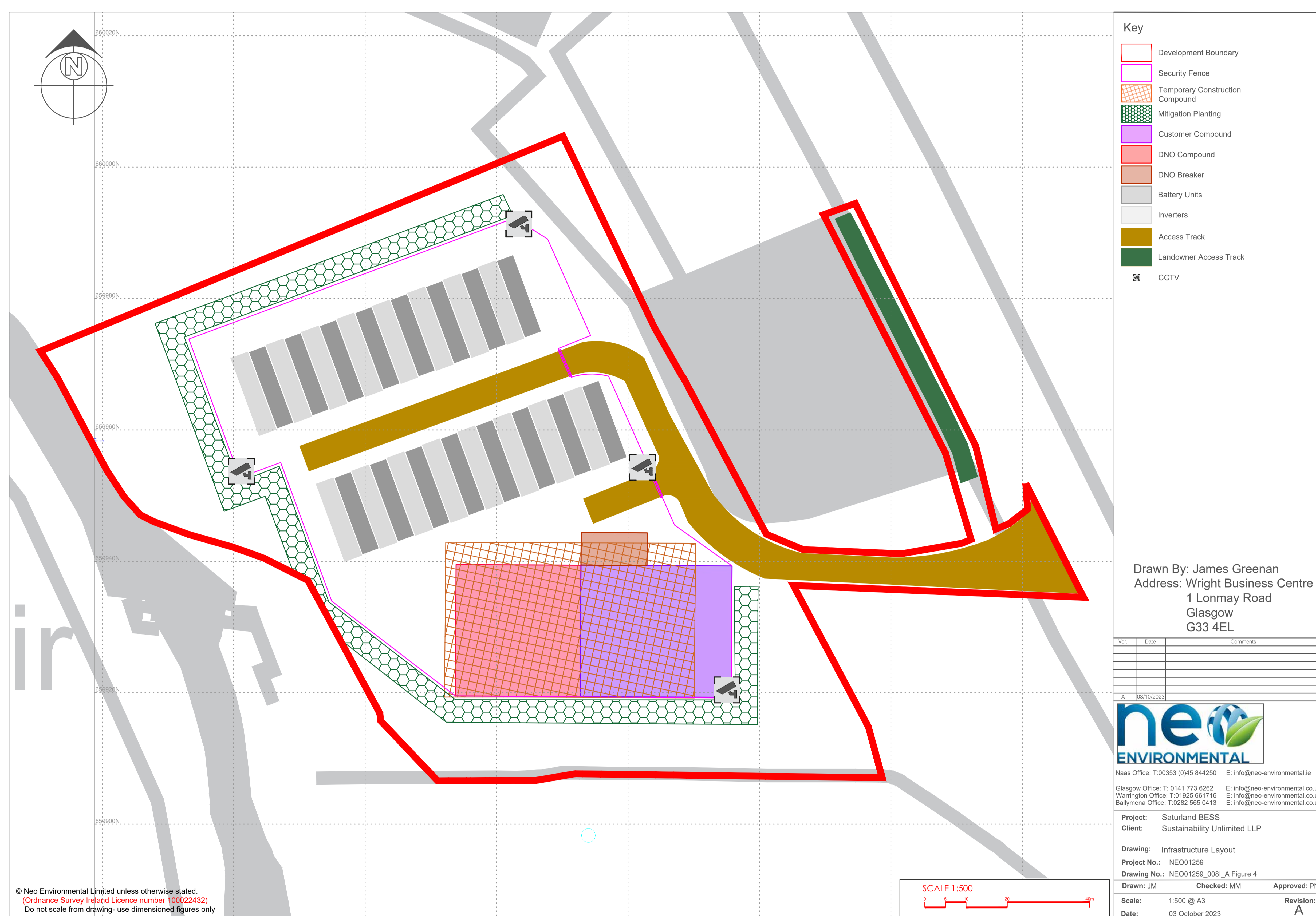
Net Zero
Scotland
Scottish
Government

Visit:

www.sustainability-unlimited.com/consultations/saturland

SATURLAND FARM BATTERY ENERGY STORAGE SYSTEM (BESS)

SITE LAYOUT

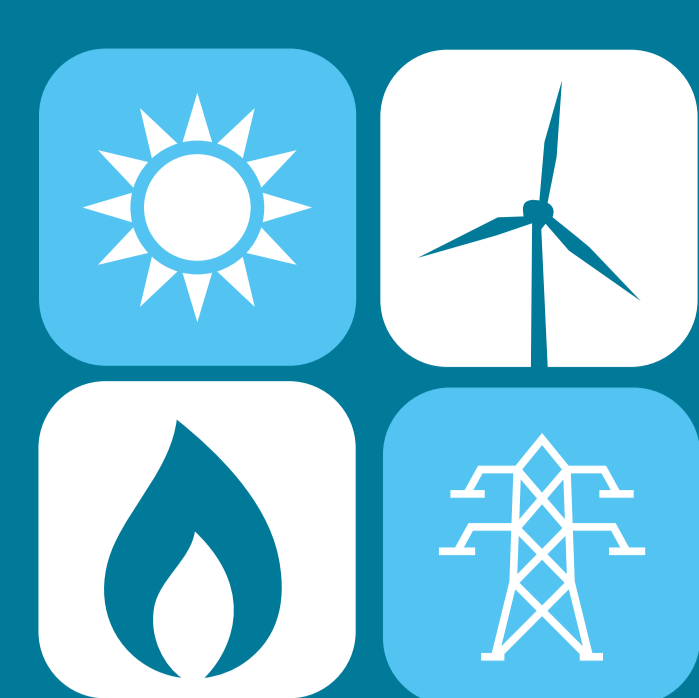


- **Containerised** battery storage facility (16 x containers) with up to 60.8MW of energy storage.
- Circa 6-meter-long containers at a height of approx. 2.5 meters.
- **An access track, electricity meter building, fences, and containers housing batteries** and related equipment would make up the development.
- **Stores extra grid generation in reserve** - returns electricity to the grid as necessary. Allows more green energy to be added to grid mix.
- This **balances** the grid's supply and demand.
- The **existing hedgerows and trees will be retained** and a belt of new planting of native trees is proposed along the roadside to screen the development.



Visit:

www.sustainability-unlimited.com/consultations/saturland



SUSTAINABILITY

UNLIMITED LLP - ENERGY & INFRASTRUCTURE ADVISORS

SATURLAND FARM BATTERY ENERGY STORAGE SYSTEM (BESS)

WELCOME



WHO IS THE APPLICANT?

- **Wholly Scottish Owned** Company dedicated to Energy Storage Development.
- Based in **Glasgow**.
- **Over 12 years experience** in the sector.
- **Delivering over 1GW** of Energy Storage for Scotland.

WHY IS BATTERY STORAGE IMPORTANT

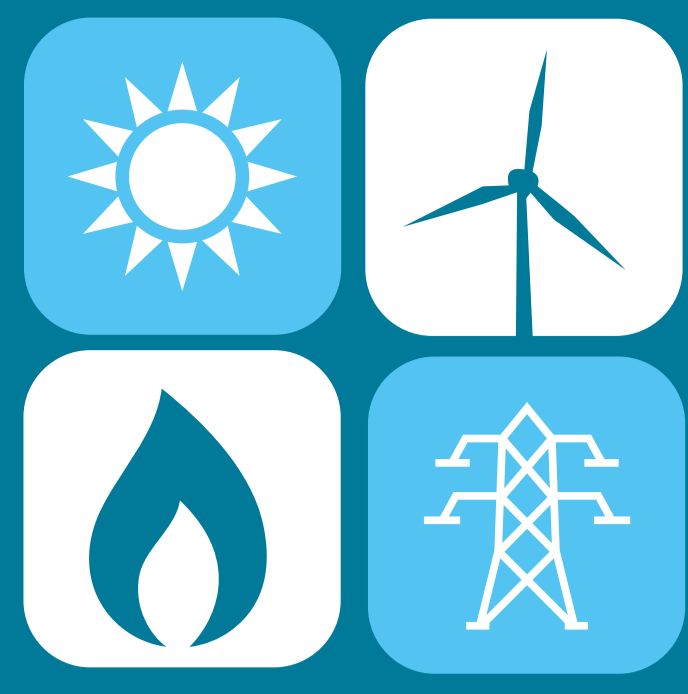
- Scotland is aiming to **achieve net-zero by 2045**.
- **Intermittent renewable energy** generation means we still have to rely on fossil fuel generation.
- **Battery Projects** let us store excess renewables energy until it is needed – plugging the gap.
- **By 2050**, according to National Grid ESO, we may require up to 40 GW of energy storage.
- New energy storage capacity is encouraged by the **Scottish Energy Strategy 2018** in order to hasten the adoption of storage innovation and deployment across Scotland.



**Net Zero
Scotland**
Scottish
Government

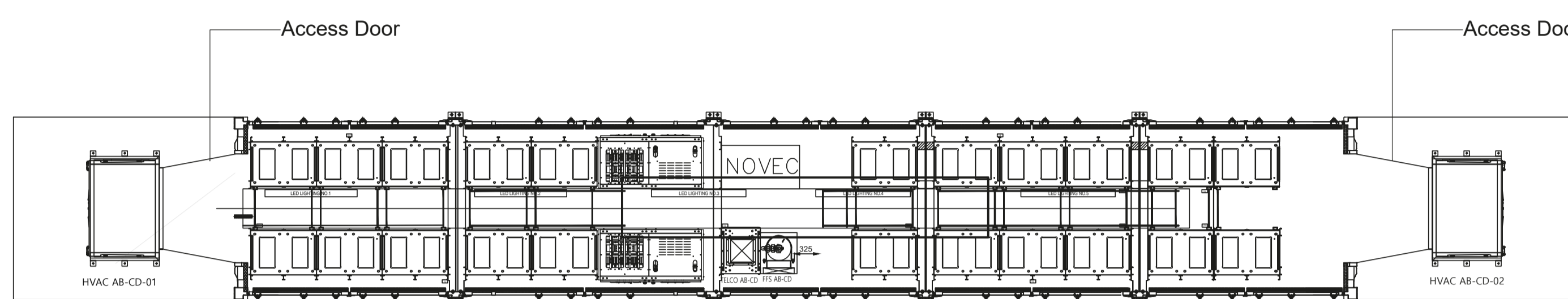
Visit:

www.sustainability-unlimited.com/consultations/saturland

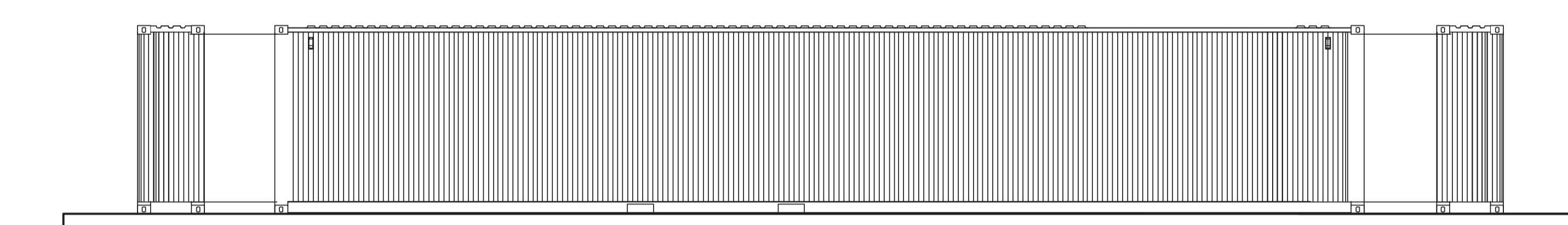


SATURLAND FARM BATTERY ENERGY STORAGE SYSTEM (BESS)

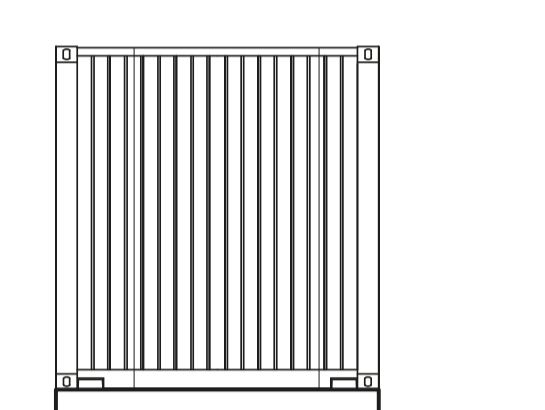
SITE ELEVATIONS



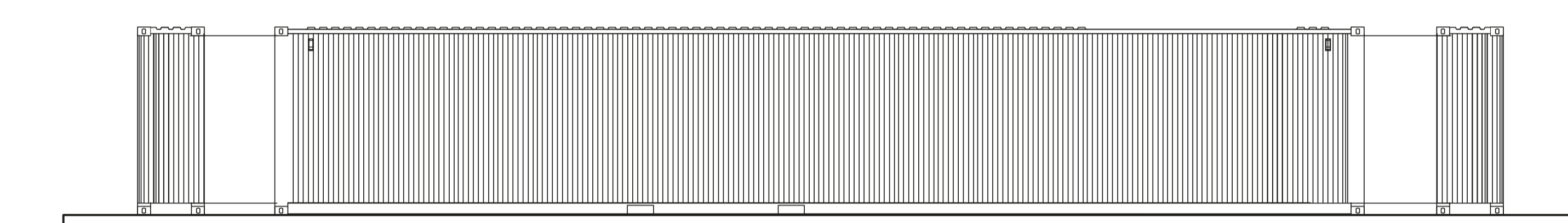
Battery Container Plan 1:50



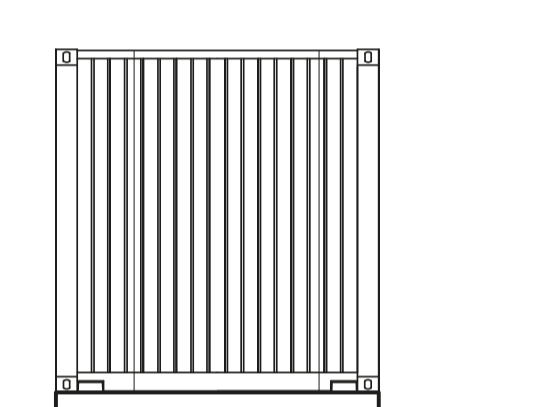
Battery Container Side Elevation 1:50



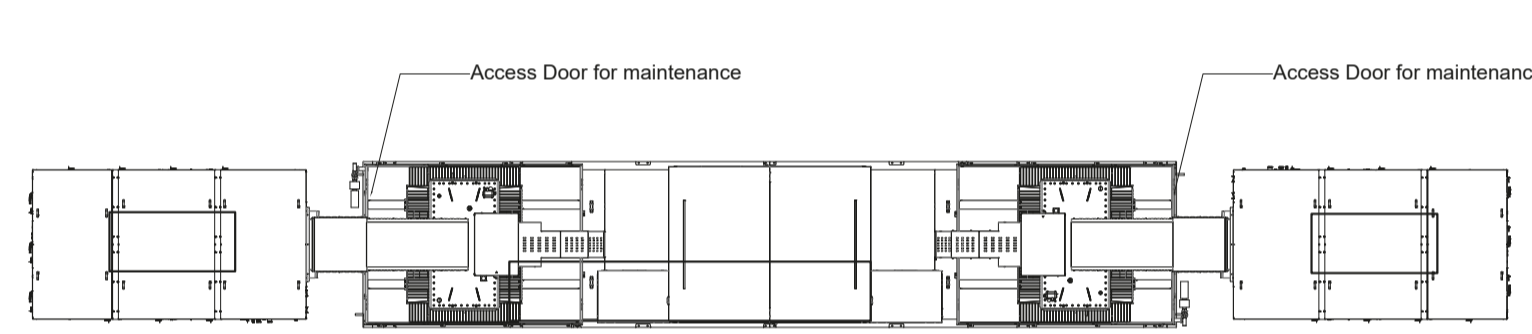
Battery Front Side Elevation 1:50



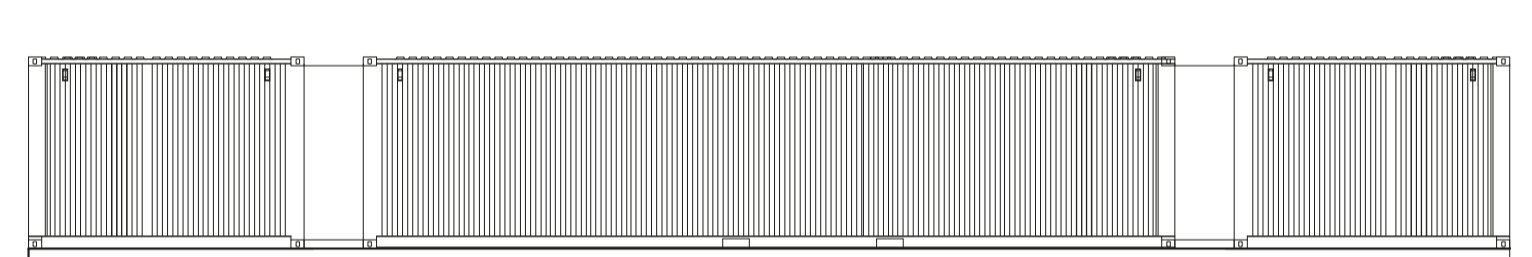
Battery Container Side Elevation 1:50



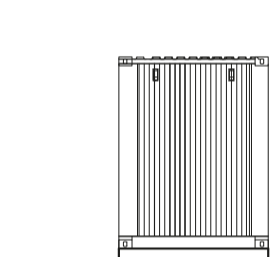
Battery Rear Side Elevation 1:50



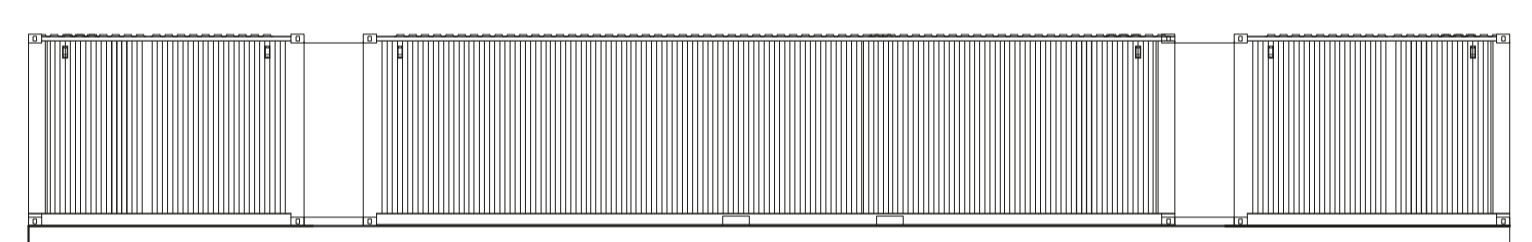
Switch Gear Plan 1:50



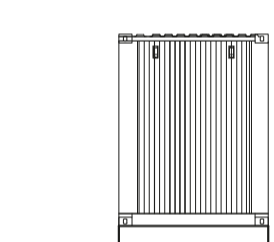
Switch Gear Side Elevation 1:50



Switch Front Elevation 1:50



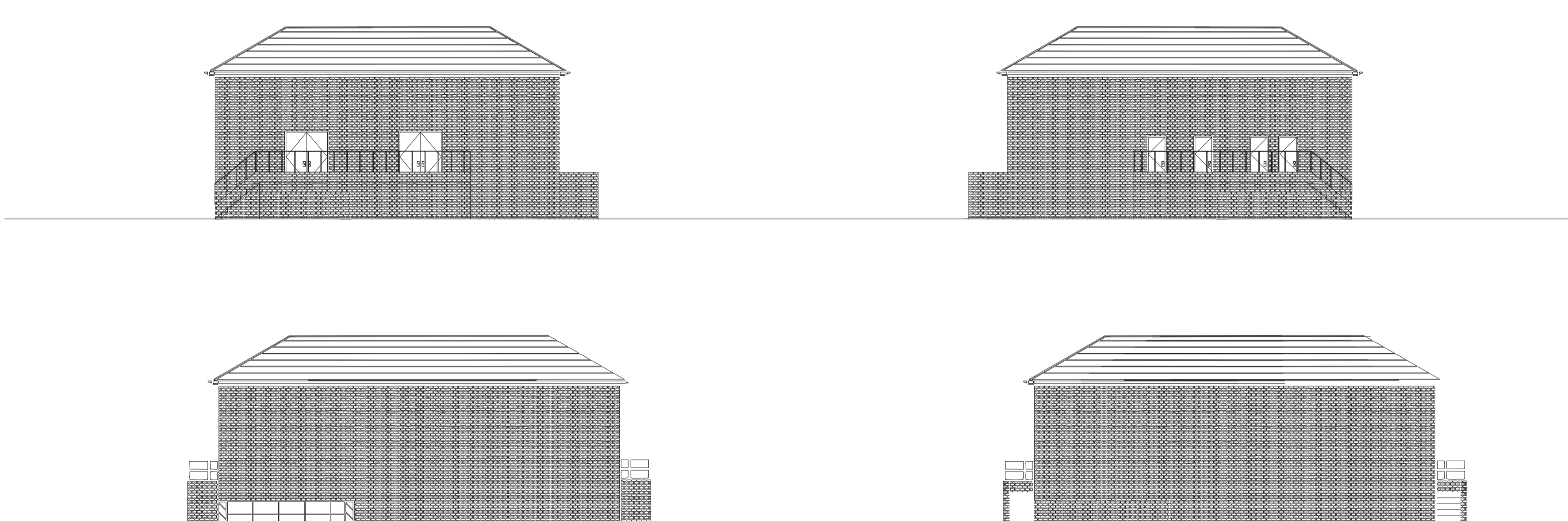
Switch Gear Side Elevation 1:50



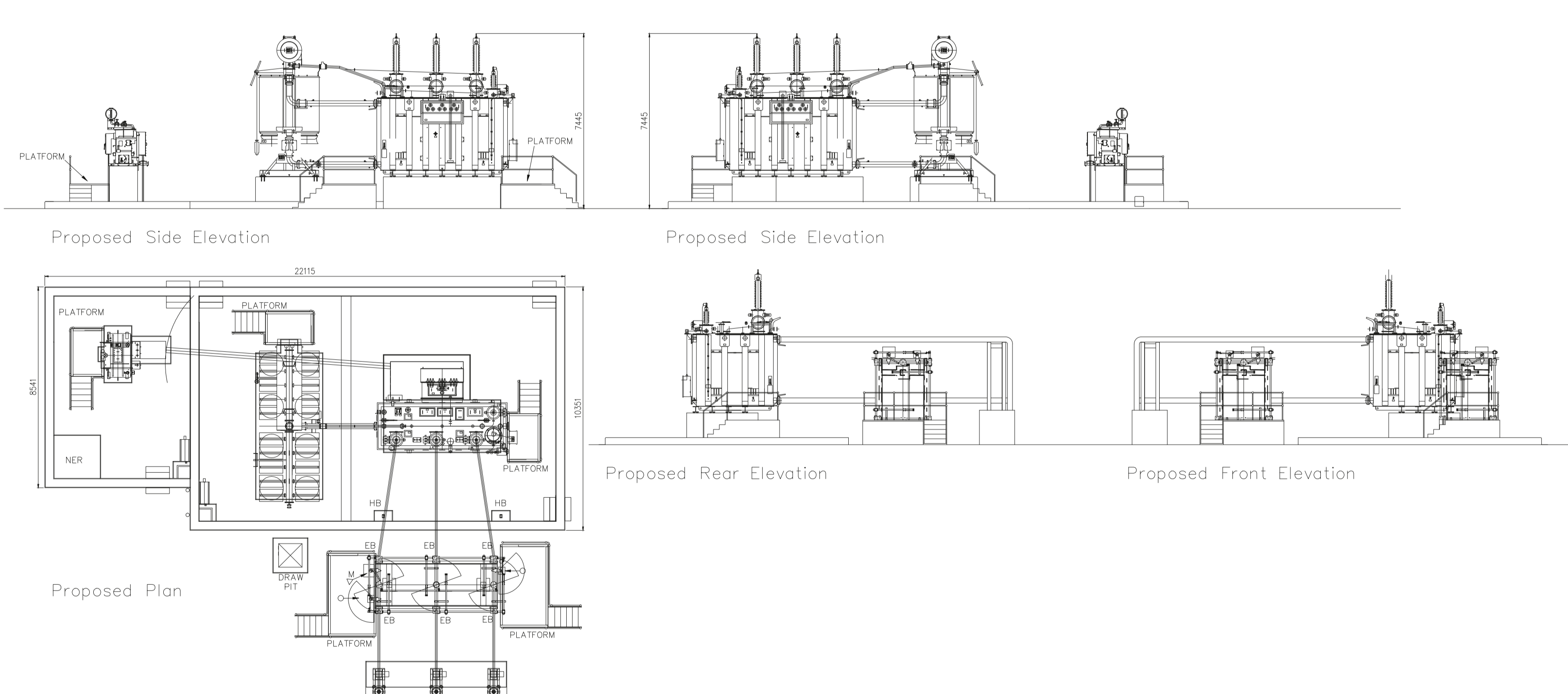
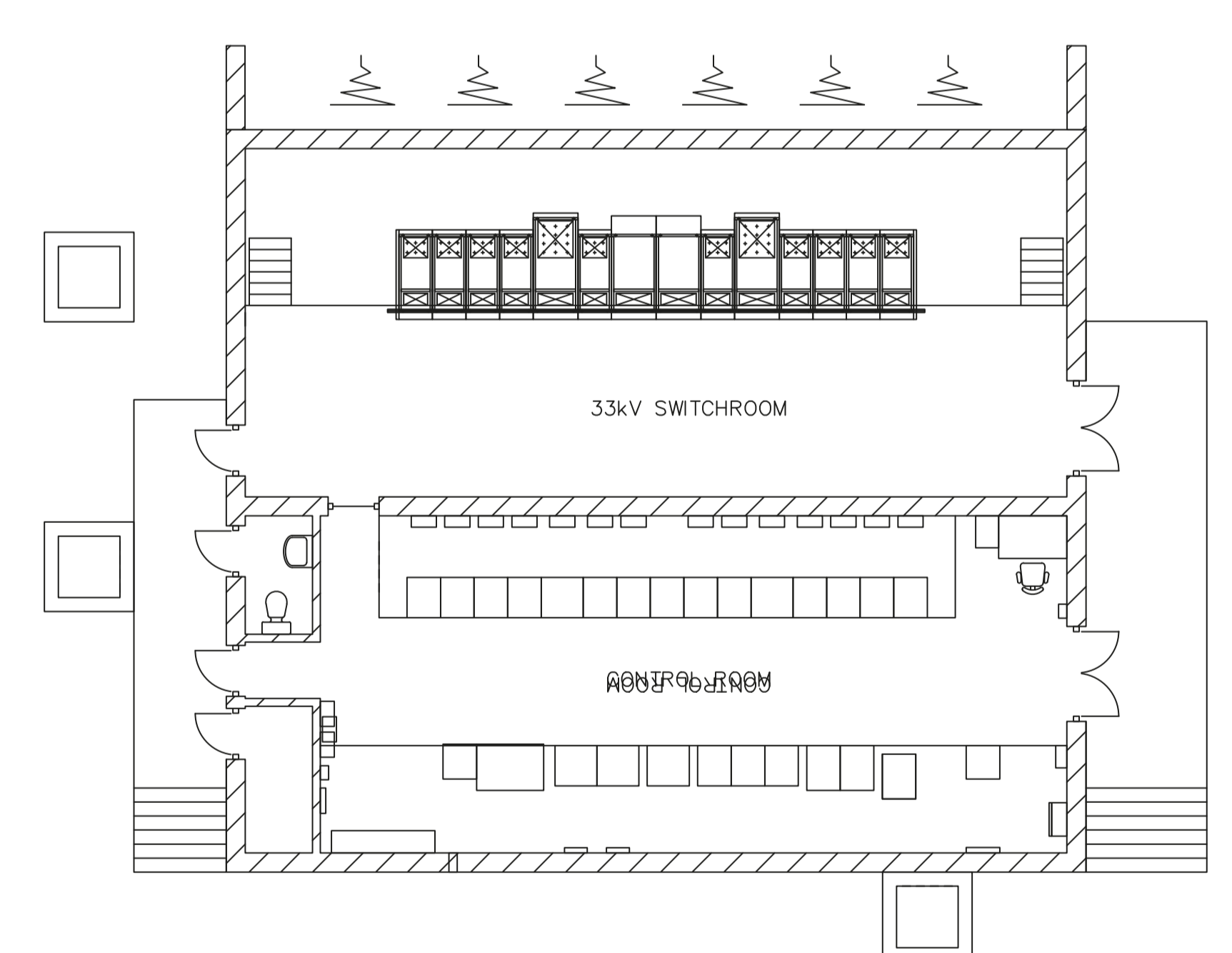
Switch Rear Elevation 1:50

- **Containerised** battery storage facility (16 x containers) with up to 60.8 MW of energy storage.

- Circa 6-meter-long containers at a height of approx. 2.5 meters.



33kV SWITCH / CONTROL ROOM



**BIG
BATTERY
COMPANY**



**Net Zero
Scotland**
Scottish
Government

Visit:

www.sustainability-unlimited.com/consultations/saturland